

CubiScan[®] 150

Applications/Benefits

Warehousing and Distribution

- Eliminates manual data entry and protects data integrity
- Provides data for storage location selection, carton selection, and shipment planning
- Provides data for use in facility layout, pallet stacking and load optimization software packages
- Interfaces directly to manifesting and warehouse management software systems

Freight Manifesting / Auditing Applications

- Dimensions freight instantly and accurately without damaging the package or its contents
- May be configured for in-line or stand-alone operation
- Gives immediate computation of dimensional-weight for shipping charges
- Facilitates load, weight, and balance planning
- Manifests freight correctly to avoid costly "Charge Backs"

More Highlights

- Interfaces directly to PC or mainframe host devices
- Visual readout instantly displays dimensions, weight, and dimensional-weight
- Can be deployed in mobile (with casters) or stationary configurations
- Outputs in metric and/or imperial units
- Uses sensing technology that is safe for both operator and package contents





CubiScan 150 Specifications

Physical Specifications	
Length	64 in (162 cm)
Width	52 in (132 cm)
Height	87 in (221 cm)
Weight	660 lbs (300 kg)
Performance Specifications	
Length Capacity	3 in (8 cm) to 48 in (120 cm)
Width Capacity	2.4 in (6 cm) to 39 in (100 cm)
Height Capacity	2.4 in (6 cm) to 40 in (100 cm)
Measurement Increment	0.1 in (0.2 cm)
Weight Capacity	0 to 150 lbs (0 to 70 kg)
Weight Increment	0.05 lbs (20 g)
Other	
Measuring Sensor	Ultrasound (50KHz)
Weight Sensor	Resistive load cell
Connectivity	2 - serial ports, EIA RS232-C, bi-directional, 1 - serial printer port, EIA RS232-C, bi-directional with flow control, 1 - Ethernet connection, 10 BaseT, 10 Mbps
User Interface(s)	Integrated display & keypad / QBIT™ Software
Data Output	ASCII
Power Requirements	95 - 240 VAC, 47 - 63 Hz, single phase
Operating Temperature	40° - 104° F (5° - 40° C)
Humidity	0 - 90% non-condensing



Safety Compliance:
UL 1950 (USA), CSA 950 (Canada), IEC 950 (International) for ITE

EMI Compliance:
FCC, Industry Canada and CISPR 22 Class A

CubiScan® and the Quantronix logo are registered trademarks of Quantronix, Inc.

Scanning New Dimensions™, Qbit™, QbitWIN™, and The FreightWeigh System™ are trademarks of Quantronix, Inc. Windows® is a registered trademark of Microsoft Corporation.

CubiScan software and firmware are protected by international and domestic copyrights.

CubiScan® products incorporate technology protected by one or more of U.S. Patents 5,042,015, 5,105,392, 5,422,861, 5,606,534, 5,220,536, 5,636,028, 5,850,370, 6,049,836, 6,064,629, 6,298,009, 6,611,787, 6,850,464, 7,277,187 and D490,328 and corresponding international patents. Other U.S. and international patents are pending.

This document Copyright© 2008 by Quantronix, Inc. All rights reserved.

Quantronix proudly introduces the CubiScan® 150 Manifesting Table: a versatile tool for today's dimension and weight-based freight manifesting applications. Designed for use in distribution, direct fulfillment, and logistics environments, the 150 combines the attributes of flexibility, accuracy, and durability into one attractive and functional package.

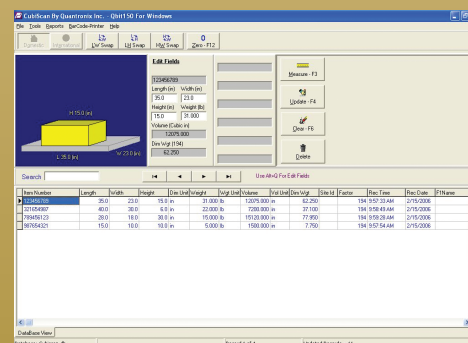
The CubiScan 150 is robust, with a maximum measurement range of 39 x 40 x 48 inches (100 x 100 x 120 cm) and a net weight capacity of 150 lbs (70 Kg). Yet it is precise, with a measurement resolution of 0.1 inches (0.2 cm) and weight resolution of 0.05 lbs (20 g).

The CubiScan 150 is mounted on locking casters, so it can be operated in a fixed position or quickly moved and redeployed when necessary.

Each unit has two active serial communication ports, one serial printer port, and an Ethernet port allowing for network connection and data transfer.

With an optional PC-based interface (called Qbit™), the CubiScan 150 is capable of buffering thousands of data records, can interface to bar code scanning equipment, label printing devices, and can communicate directly (in batch or real-time mode) with your manifesting or warehouse management system.

Discover how the CubiScan 150 can help eliminate costly Back-Charges and make a difference in the most important aspect of your business: the bottom line.



CUBISCAN
CUBING & WEIGHING SYSTEMS BY QUANTRONIX

380 South 200 West • P.O. Box 929 • Farmington, Utah • 84025 • USA
1-800-488-CUBE • (801) 451-7000 • Fax: (801) 451-0502
e-mail: info@cubiscan.com • www.cubiscan.com